

Printer

# SUNMI 58 Thermal Receipt Printer

Print at 165mm/s with 58 high-performance Seiko thermal print head

Compatible with systems including Windows/Android

High capacity to accommodate 58mm width, 60mm diameter till roll

Obtain printer status from cash register backstage and LED indicator

Tear receipts with one hand easily due to the zig-zag cutter edge design

Space-saving built-in adapter and plug-and-play Type-C USB port



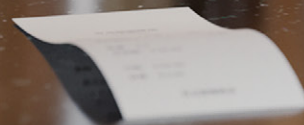
Takeaway  
ordering



Mobile  
ordering



Print at  
reception



# SUNMI 58 Thermal Printer

## Technical specifications



### Printer

Print mode: thermal line  
Resolution:  
203 × 203DPI  
Active print width:  
48mm Max  
Print speed:  
up to 165mm/s



### Storage

memory: 64KB  
FLASH: 4MB



### Character sets

Font library:  
Default GB18030+English  
International character set:  
U.S.A., France, Germany,  
U.K., Denmark I, Denmark II,  
Italy Sweden, Spain I,  
Spain II, Japan, Norway,  
Latin America, Korean



### Barcode

1D: Code 39, Code 93,  
Code 128, Codabar,  
Interleave 2 of 5, EAN-8,  
EAN-13, EAN-128, UPC-A,  
UPC-E, EAN/UPC  
(2-digit or 5-digit  
additional code)  
2D: QR, 512 characters Max.



### Detections

Sensor: short-of-paper  
detection, temperature detection,  
print head fault point detection,  
power voltage detection



### Keys

Function key: one  
Power on/off: one



### LED indicators

Power: blue  
Warning: red



### Ports

Cash drawer:  
one RJ12, 12V/1A  
Communication: Type-C  
USB2.0  
Power: 8-shape power port



### Power supply

Input: AC 100 – 240V  
~50/60Hz  
Output: DC 12V/2.5A  
Method:  
built-in power supply



### Paper

Type: continuous thermal paper  
Width: 58mm  
Thickness: 51micron~68micron  
Diameter: Max.Φ60mm  
Separation: tear  
Paper out direction: front/top



### Environment

Working environment:  
0°C~50°C,  
30%~85%RH (40°C)  
Storage environment:  
-20°C~60°C,  
10%~90%RH (40°C)



### Protocol Driver

Printing protocol:  
ESC/POS instruction set  
Operating system:  
Windows 7/8/10, Android



### Size

116mm (L) ×116mm (W) ×116mm (H)

#### Note:

The actual specs of products launched to the market shall take precedence over the info listed in this catalogue; any change may be made without prior notification.